

# CALIBRATION POTS

## CALIBRATION POTS FOR CALIBRATING CHEMICAL PUMPS

### APPLICATIONS:

Calibration Pots provide an accurate pump calibration for higher pump flow rates. The totally enclosed construction assures maximum safety. The gauge is installed between the suction side of the chemical pump and the tank. The pump rate is checked by closing the valve between the tank and gauge and observing the level change in the gauge for one minute.

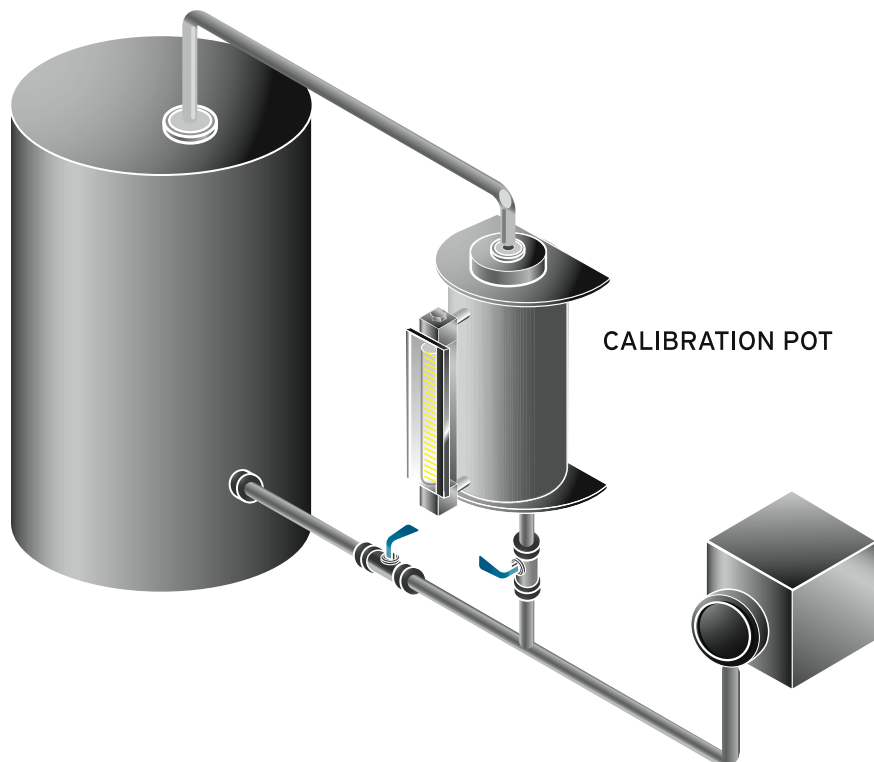
### EQUIPMENT FEATURES:

- Design utilizes a tank with shielded tubular gauge for maximum protection from glass breakage
- Calibration pots have a maximum design pressure of 150 PSI
- Provide a means for accurately checking the feed rates of a chemical metering pump
- Manufactured in PVC, Carbon Steel and 316 Stainless Steel as standard materials. We can provide other materials to meet your chemical resistance requirements.
- Individually hand calibrated to assure maximum accuracy
- Customization is always an option, give us your design criteria and we will design a gauge to fit your needs and specifications

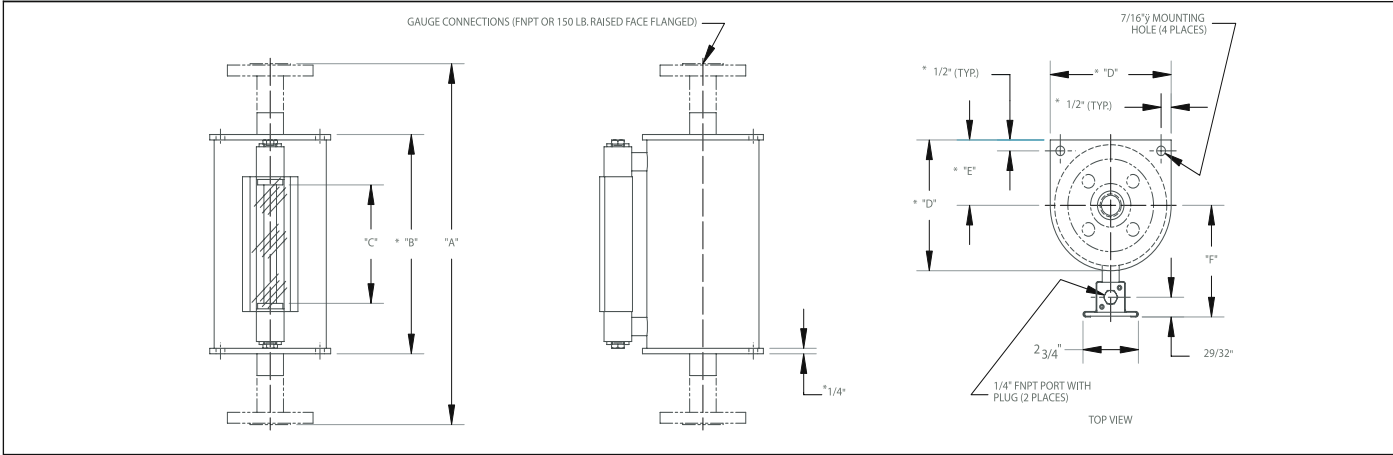


CALIBRATION POTS AVAILABLE WITH  
FLANGED OR THREADED CONNECTIONS

### COMMON APPLICATION



# CALIBRATION POTS



## CALIBRATION POTS GAUGE SPECIFICATIONS

MODEL NUMBER (CONNECTION SIZE)		MAXIMUM PUMPING RATE (BASED ON A 1 MINUTE TEST)				GAUGE VOLUME		A		* B	C	* D	* E	F
THREADED	FLANGED	GPH	GPD	LPH	LPD	GBV	LBV	FNPT	FLGD.					
15842 (3/4" FNPT)	15843 (3/4" 150#)	2.5	60	9.46	227.12	0.04	0.16	21-7/16"	24-3/8"	N/A	15-3/4"	N/A	N/A	2-7/8"
15844 (3/4" FNPT)	15845 (3/4" 150#)	5	120	18.93	454.25	0.08	0.32	26-11/16"	29-5/8"	N/A	21"	N/A	N/A	3"
15846 (3/4" FNPT)	15847 (3/4" 150#)	10	240	37.85	908.5	0.17	0.63	25-11/16"	30-5/8"	24-1/8"	19-1/2"	2-3/8"	1-3/16"	3-9/32"
15848 (1" FNPT)	15849 (1" 150#)	20	480	75.71	1816.99	0.33	1.26	23-5/8"	28-3/8"	21-7/8"	17-1/4"	3-1/4"	1-5/8"	3-25/32"
15850 (1" FNPT)	15851 (1" 150#)	40	960	151.42	3633.98	0.67	2.52	28-7/8"	33-5/8"	27-1/8"	22-1/2"	3-7/8"	1-15/16"	4-3/32"
15852 (1" FNPT)	15853 (1" 150#)	60	1440	227.12	5450.98	1	3.79	26-3/8"	31-1/8"	24-5/8"	20"	4-7/8"	2-7/16"	4-19/32"
15854 (1-1/2" FNPT)	15855 (1-1/2" 150#)	80	1920	302.83	7267.97	1.33	5.05	22-3/16"	26-5/8"	20-1/8"	15-1/2"	6"	3"	5-1/8"
15856 (1-1/2" FNPT)	15857 (1-1/2" 150#)	100	2400	378.54	9084.96	1.67	6.31	26-3/16"	30-5/8"	24-1/8"	19-1/2"	6"	3"	5-1/8"
15858 (2" FNPT)	15859 (2" 150#)	120	2880	454.25	10901.95	2	7.57	24-5/8"	28-5/8"	22-1/8"	17-1/2"	7"	3-1/2"	5-21/32"
15860 (2" FNPT)	15861 (2" 150#)	140	3360	529.96	12718.94	2.33	8.83	27-5/8"	31-5/8"	25-1/8"	20-1/2"	7"	3-1/2"	5-21/32"

• Model number 15842 through 15845 gauges are not equipped with end plates. Model number 15846 through 15851 gauges are equipped with 1/4" thick end plates, but they are round and do not have 7/16" Ø mounting holes. See Kenco website for a detailed outline drawing of each model.

## ORDERING SYSTEM Calibration Pot

REQUESTED BY: \_\_\_\_\_ COMPANY: \_\_\_\_\_

ADDRESS: \_\_\_\_\_ CITY: \_\_\_\_\_ STATE: \_\_\_\_\_ ZIP: \_\_\_\_\_

PHONE: \_\_\_\_\_ FAX: \_\_\_\_\_ EMAIL: \_\_\_\_\_

### Gauge Model Number

15842 15847 15852 15857  
 15843 15848 15853 15858  
 15844 15849 15854 15859  
 15845 15850 15855 15860  
 15846 15851 15856 15861

### Material of Constuction

CS = Carbon Steel  
 S6 = 316 Stainless Steel)  
 Other (Please specify)

### Seal Material

V = Fluorocarbon  
 A = Aflas  
 B = Buna-N  
 T = FEP Encapsulated Silicone  
 E = Ethylene Propylene  
 • Other Seal Materials Available.  
 Consult Factory For Options.

### Scale Options:

GPH = Gallons Per Hour  
 LPH = Liters Per Hour  
 GPD = Gallons Per Day  
 LPD = Liters Per Day  
 GBV = Gallons By Volume  
 LBV = Liters By Volume  
 • Other Scale Options Available.  
 Consult Factory For Options.